

HELP US BUILD YOUTH HUB CHRISTCHURCH!



Te Hurihanga o Rangatahi
The Youth Hub

VISION

To enable all young people in Ōtautahi the opportunity to lead healthy, safe and valued lives, fulfilling their potential and vibrantly contributing to their community.

Mission statement

The Youth Hub creates a safe haven for young people needing support between 10 and 25 years of age. It is a collaboration of co-located services that gives opportunity for young people to grow in an environment of encouragement and positive social engagement. The village of wellbeing-focused services are supported to ensure best evidence-based practice, sharing a core commitment to Mana Taiohi principles of youth development and honouring Te Tiriti o Waitangi. In partnership with the Youth Hub Trust, relationships are fostered by manaakitaka, open communication, honesty and ethically sharing information in the best interests of young people.



WHY WE NEED YOUTH HUB CHRISTCHURCH

We know that one in every five young New Zealanders are struggling and require support from time to time, while one in 10 face severe adversity in many aspects of their lives including health, education, employment and housing. To exacerbate this, Christchurch's young people have had to endure the 2010-11 earthquakes, 2019 mosque shootings and the COVID-19 pandemic. These events are hard on all young people but are often crippling for those already suffering adversity.

Youth Hub Christchurch aims to break this cycle of adversity by being the turning point in the lives of young people aged 10-25. The Hub is the first of its kind in New Zealand and is based in the heart of central Christchurch. It will provide everything Christchurch's young people need to improve and maintain their mental health from supported housing and health and support services, to recreation and creativity.

The Hub connects socially supportive organisations under one roof to deliver a holistic one-stop model of wrap-around services including mental health, medical, education, employment and training, transitional housing, recreation,

creativity, and social entrepreneurship. Importantly, it will do this in a youth-centric and accessible environment where young people feel accepted and supported as they develop into adults with respect to their ethnicity, culture, sexual orientation and gender.

The plans for the Youth Hub closely align with transitioning young people out of state care, fulfilling the goals of the Child and Youth Wellbeing Strategy and improving youth mental health outcomes.

The Hub will replace competition with collaboration and focus on young people who have had a difficult start.

From a people and economic viewpoint, we believe Youth Hub Christchurch is an investment worth making. We hope you agree.

A handwritten signature in black ink, appearing to read 'Sue Bagshaw'.

Dame Sue Bagshaw
Chair of the Youth Hub Trust



WHAT WE'RE BUILDING

The Youth Hub is located at 109 Sailsbury Street in central Christchurch, with Tūranga, the Margaret Mahy playground, Bus Exchange and the Metro Sports complex all within walking distance.

The acre of land was specifically purchased for the project by Anglican Care and is leased back to the Youth Hub Trust to build and run the facility.

The facility has been designed to fit into its local surroundings with involvement from acoustic and traffic engineers and urban design and landscaping experts to ensure it enhances its residential environment.

Young people were purposefully included in the design process to ensure the facility meets their needs and local neighbours have been consulted, with the design adjusted to address their concerns.



STAGE 1

Stage One consists of a wrap-around services block where a dozen youth providers will work, a wing of supported housing with 22 bedrooms, and an outdoor activities courtyard. Stage One is opening from late 2024.



STAGE 2

Stage Two is an Events Centre with capacity for up to 200 people. The space will cater for a wide variety of activities such as music, dance, indoor sports, drama, performances, talks and creative arts. Stage Two will be constructed in 2025.



STAGE 3

Stage Three consists of housing for young parents with young children. Stage Three will open when funding is secured.



STAGE 4

Stage Four consists of communal spaces including a café, creative arts space, art gallery, Manaaki Whare, carving workshop and some quiet gardens and spaces for rest and relaxation. Stage Four will open when funding is secured.

SUPPORTED HOUSING



A key feature of the Youth Hub is its supported housing facilities. These will provide accommodation for up to 22 young people aged between 16-24 for a period of 3-18 months, provided they are actively looking for education, training or work. Once these young people have established regular income with the support of supervision and training available on site, they will be able to transition into rental housing of their own.

Tenants will be assisted with their health and wellbeing, employment, catch-up education, and support needs. There will also be opportunities for creativity, recreation and learning new skills like cooking and growing vegetables.

We are also fundraising to build another wing of housing for young parents with young children.

Facts & testimonials

14%

of 20-24 year olds were not employed or in some form of education or training

*Stats NZ Household Labourforce survey 2023

16%

reported unmet need for professional mental health support

*Stats NZ Wellbeing Stats 2021

26%

rated themselves as having poor overall mental wellbeing

*Stats NZ's 2021 Wellbeing Stats



“As a young androgynous glam rocker I was alienated and belittled by everyone from high school staff, to family, GP’s and WINZ. It was a huge relief to discover the Youth Health Centre where I felt valued and not judged. It was a caring environment where I could just be myself. Don’t we all deserve that?”

Lyttelton-based rockabilly musician Lindon Puffin

21%

reported high or very high levels of psychological distress

*NZ Health Survey 2022/23

40%

of 18-34-year-olds say they have seriously considered suicide or self-harm in the past year

*Ipsos Global Advisor Study 2022

28%

felt lonely at least some of the time

*Stats NZ Wellbeing Stats 2021

“I see the Youth Hub as a city Marae, where all young people feel supported and safe in sharing their stories. This is particularly important for our Māori and Pasifika youth, to have a place they can call their own, their Tūrakawaewae – a place to stand. This environment also enables the expression of key values, such as Manaakitaka/Hospitality and Whanaukataka/Developing strong family bonds together.”

Wiremu Gray, Counsellor and Youth Hub Trustee
- Kai Tahu/ Ngati Porou.

*Youth stats cover age range 15-24-years.

Meet the organisations partnering with the Hub

The Youth Hub will avoid gaps and overlaps in the provision of services to young people by having a diverse range of organisations co-located.

Anchor tenants in the Youth Hub are Te Tahī Youth, Youthline and VOYCE Whakarongo Mai. Other organisations will also be able to book one of the seven available rooms or use the open-plan office space to meet with young people.

Other organisations such as Work and Income, Probation Services, Oranga Tamariki, Kāinga Ora, Yellow Brick Road, and Careers NZ will also be invited to have an office on site for visiting staff.

We estimate these providers will deliver up to 8,000 youth appointments a year.

“A young person may walk in with more than just one problem and rather than having to do the phone calls or referrals, we can be like – Oh actually, let’s just take a walk down the hall and talk to these people.”
– *Ataahua Hepi, Youthline volunteer coordinator*



Family Works helps young people to access the assistance they need including the Youth Service, Youth Payment and Young Parent Payment.



Undertakes evaluation of services to young people, researches how youth development can be assisted, trains professionals who work with young people and advocates for and with young people.



Social support network for gay, lesbian, bisexual, transgender, intersex, takataapui, fa’afafine and all diverse/questioning (rainbow) young people in Canterbury.



Community Law Canterbury (Te Ture Whanui o Waitaha) is a part of Community Law Centres o Aotearoa. They are a collection of non-profit organisations across the country providing free legal assistance to those in need.



Will act as landlord for the supported housing facilities. They also support families in need and help to build resilient and responsive communities.



Nurses who work in schools will be able to use the Hub to meet with their employers.



New Zealand’s state distance education provider, offering a wide range of programmes from early childhood through to NCEA Level 3.



Empowers and supports people with learning disabilities to be strong and valued individuals in New Zealand.



Provides free medical care, youthwork and counselling services for young people aged 10-24 years. It also employs youth workers who assist with finding accommodation, work and training, and advocates for young people in the community.



Supports young people in care and who are leaving care.



Youthline is a youth development organisation assisting young people to reach their potential. It runs a 24/7 crisis helpline with telephone, text and web-chat support providing crisis support as well as information and referral services.



Provides a professional and comprehensive employment service for people seeking paid work.



Comcol provide a free Youth Service for 16-19-year-olds offering guidance and support to help eligible young people into education, employment and work-based learning. Their youth coaches provide intensive, tailored support to identify goals and work alongside the client to achieve them.



A Christian social service agency which seeks to support, care and advocate for those who are marginalised through social and economic factors and are at risk through unemployment, inadequate housing, family breakdown, addiction, financial difficulties, abuse or other difficulties.

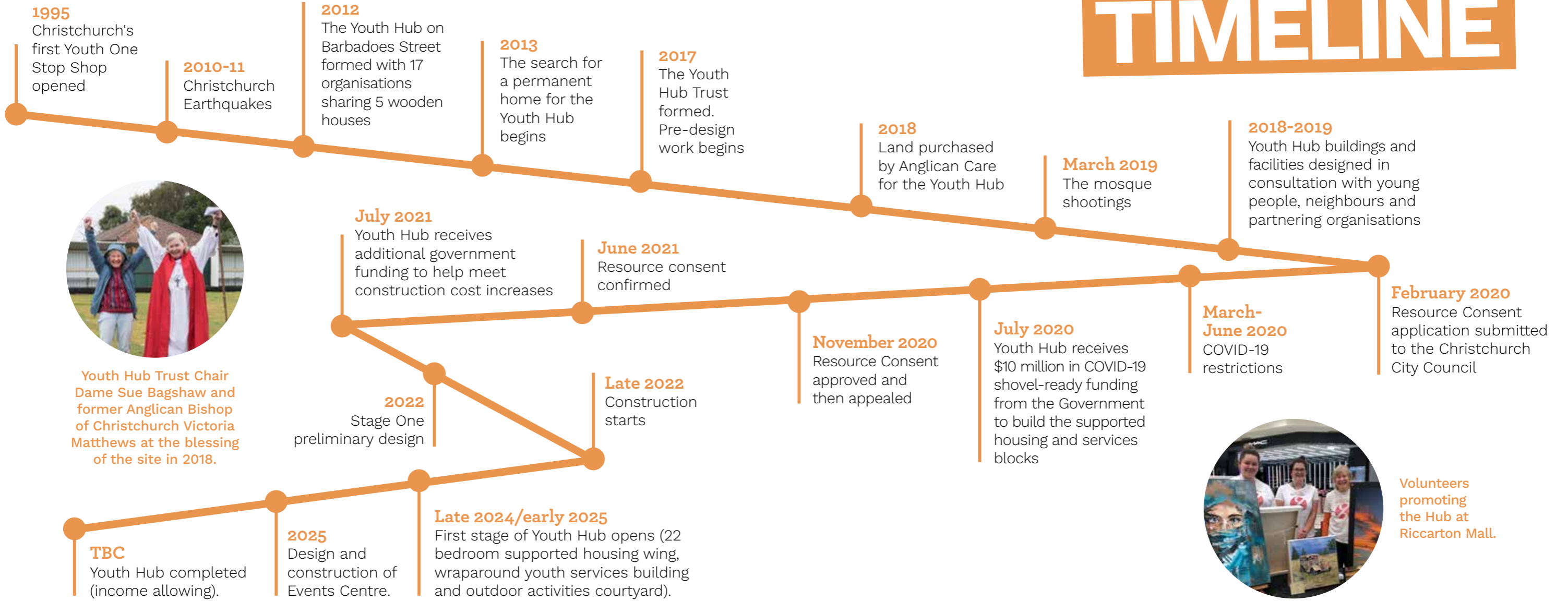


Southern Health School provides educational support to ākonga (Year 0-14) whose health prevents them from engaging in mainstream education and guides them in their transition to the next steps in their education.



“Te Kura is excited to be a partner working in a collaborative model of wraparound services at Youth Hub Christchurch. Working together with other services is a key recipe for success to support these rangatahi in their education and training.”
– *Amy Stewart, Regional Manager, Te Kura*

PROJECT TIMELINE



Youth Hub Trust Chair Dame Sue Bagshaw and former Anglican Bishop of Christchurch Victoria Matthews at the blessing of the site in 2018.



Volunteers promoting the Hub at Riccarton Mall.

About the Youth Hub Trust

The Trust was formed in 2017 to design, build and run the Youth Hub. It is chaired by Dame Sue Bagshaw.

Sue is a youth health advocate. She established the 198 Youth Health Centre in 1995 and her 'one-stop-shop' model of offering young people free doctor's appointments, counselling and other support services under one roof has been adopted around New Zealand.

The Trust also has a youth advisory board who are helping to develop the Hub.

“

The Hub will give our young people a place to belong and a place where they can meet others and feel safe. It will offer many opportunities for them to grow and develop real life skills or just be a place to hang out with new friends.”
Jane Watson, New Zealand netballer and Youth Hub Ambassador



Trustees

Phil Bagshaw / General Surgeon who set up the Canterbury Charity Hospital

Phil Siataga / Counsellor, Wellbeing Promoter

Judge Rob Murfitt / Retired Family Youth and District Court Judge

Wiremu Gray / Cultural Supervisor, Consultant, Counsellor

Brad McDonald / Lawyer and Notary Public specialising in employment law

Andrea Gosney / Accountant at Small Business Accounting (SBA)

Rachel Walsh / Partner at Clark Boyce Lawyers

YOUTH HUB WHAKATAUKĪ

E tū kahikatea
Hei whakapae ururoa
Awhi mai awhi atu
Tātou tātou e

*Stand like the kahikatea
To brave the storms
Embrace and receive
We are one together*

The Youth Hub site at 109 Salisbury Street in the central city used to be a swamp area where many Kahikatea trees grew. The trees grew to be the tallest trees in the forest by interlocking their roots in the swampy ground to stay stable.

We hope that Youth Hub Christchurch will provide young people with interlocking roots in the Youth Hub community to have a place they can call their own – their Tūrakawaewae – a place to stand, to move on and produce fruit – te koroī of the Kahikatea tree.



HOW YOU CAN HELP



We have fundraised \$24 million for the project and are halfway to completing the Hub!

We couldn't have got this far without your generous support.

Let's not stop now!

Invest in Christchurch's future by donating today.



Bespoke recognition of your donation will be developed in partnership with you.

100% of the funds raised will go towards building and running the Youth Hub.

Individual donations of more than \$5 qualify for a donation rebate as we are a registered charity.

CONTACT Sue Bagshaw, Chair of the Youth Hub Trust

PHONE 021 355 730

EMAIL fundraising@youthhubchch.org.nz

DONATE AT givealittle.co.nz/org/youthhubchch

BANK ACCOUNT 38 9019 0612585 00

WEBSITE www.youthhubchch.org.nz/donate

The Youth Hub is a registered charity
Charities Number CC54728 / GST number 123 693 965

