



Te Hurihanga o Rangatahi
The Youth Hub

**HELP US
FINISH
BUILDING
YOUTH HUB
CHCH**

WHY WE NEED YOUTH HUB CHRISTCHURCH

Every day, young people in Christchurch are facing mental health challenges, isolation and housing insecurity. The demand for support is urgent and growing.

Youth Hub Christchurch is already proving what's possible when youth support services and housing support come together in one place.

Stage One of the Hub opened in late 2024 and has quickly become a vital part of Christchurch's social infrastructure for rangatahi.

- Our supported housing, delivered in partnership with the Christchurch Methodist Mission, has supported more than 50 rangatahi at risk of homelessness with safe, stable housing. Demand far exceeds capacity, with up to 10 referrals for every available room.
- Our youth services building is nearing full occupancy, with a dozen organisations delivering wraparound support onsite by utilising our offices and meeting rooms.
- Our outdoor activities courtyard is open daily for young people to gather and have fun in a safe and supportive environment and our newly

opened Events and Activities Centre provides a flexible space for young people to express themselves and learn new skills.

- In our first full year, the Hub has already delivered close to 8000 connection points with young people.

This is a place where young people feel safe, supported, and connected – where they can access the help they need and feel a sense of belonging.

BUT... WE ARE ONLY HALFWAY THERE

With more than \$25 million already raised, Youth Hub Christchurch is paving a new model for youth mental wellbeing and suicide prevention. However, critical parts of our vision remain unfinished.

We are seeking \$14.3 million to complete the next stages of the Hub, including:

- A manaaki/welcome area with essential facilities for young people and their whānau
- Creative arts spaces where young people can learn new skills, providing pathways into education, training and employment.

These spaces are essential to creating a place where young people naturally gather, build connections, and access support early.

Prevention, not crisis response. Connection, not isolation.

Your support can help finish what we've started.

This is a rare opportunity to be part of a legacy project that will support generations of young people in Christchurch.

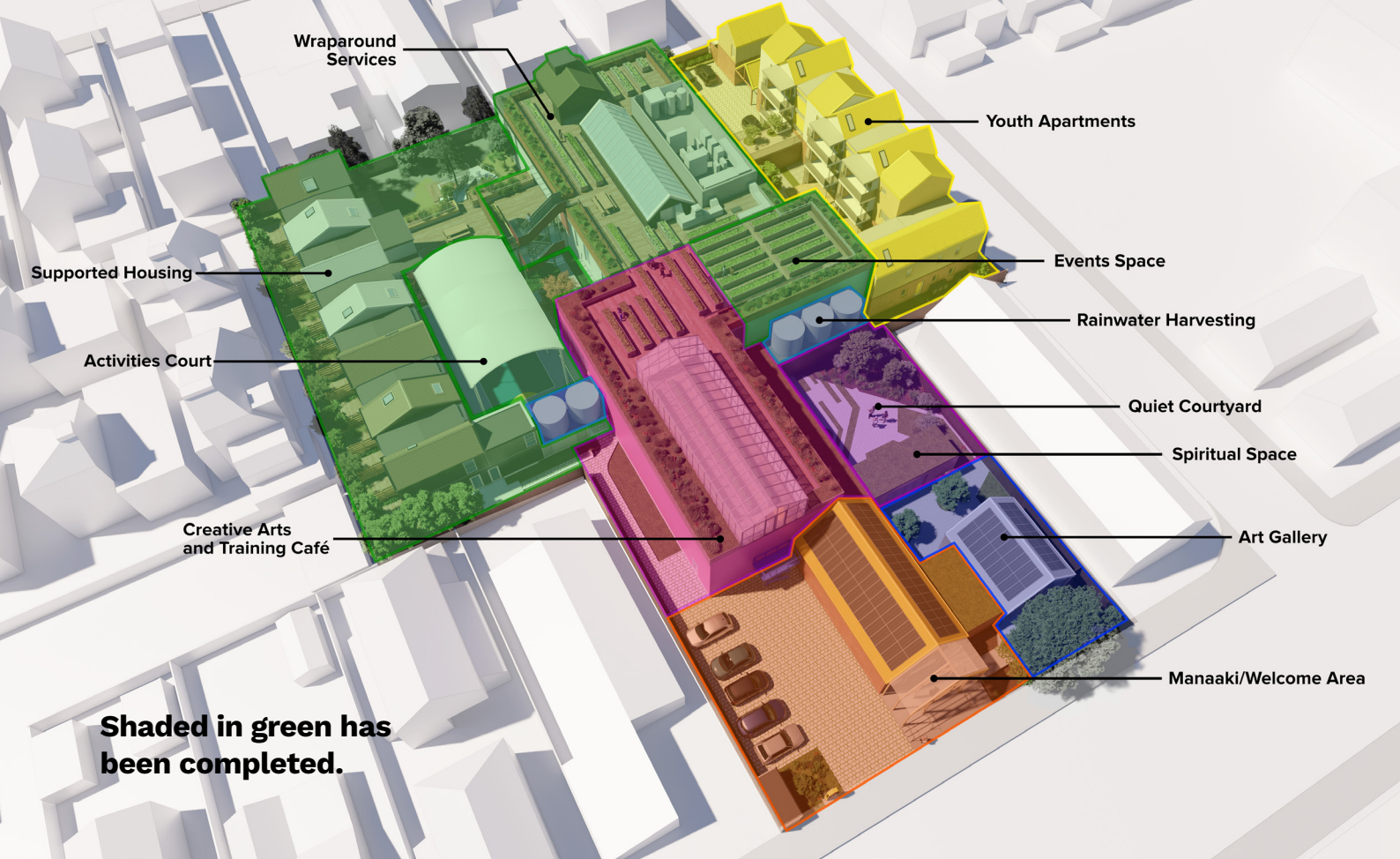
With your help, we can complete Youth Hub Christchurch and ensure every young person has access to the support, connection, and opportunities they need to thrive.

JOIN US IN FINISHING YOUTH HUB CHRISTCHURCH



A handwritten signature in black ink, appearing to read 'Sue Bagshaw'.

Dame Sue Bagshaw
Chair, Youth Hub Trust



YOUTH HUB CHRISTCHURCH DEVELOPMENT



FUNDING PACKAGES

CREATIVE ARTS AND TRAINING CAFÉ

This purpose-built facility will enable the delivery of structured programmes that build practical skills, confidence, and pathways into education, training and employment.

At its core is a supervised 'makerspace' - providing hands-on learning opportunities including sewing, fabrication, digital and design. These programmes are critical for re-engaging young people who are disconnected from traditional education.

The space will also include dedicated band practice rooms, workshop and training rooms, and informal

\$10.2 MILLION

breakout areas - ensuring capacity to deliver a wide range of youth development programmes onsite.

Integrated storage and bike parking will also support daily use and accessibility.

Complementing this, a training café will provide real-world work experience, supporting employment pathways for rangatahi and a great place for young people and youth-focussed organisations to gather.

It will also include a dedicated whānau room to support parents and caregivers, recognising the wider network required to support positive youth outcomes.



MANAAKI WELCOME / DROP IN AREA

\$2.35 MILLION

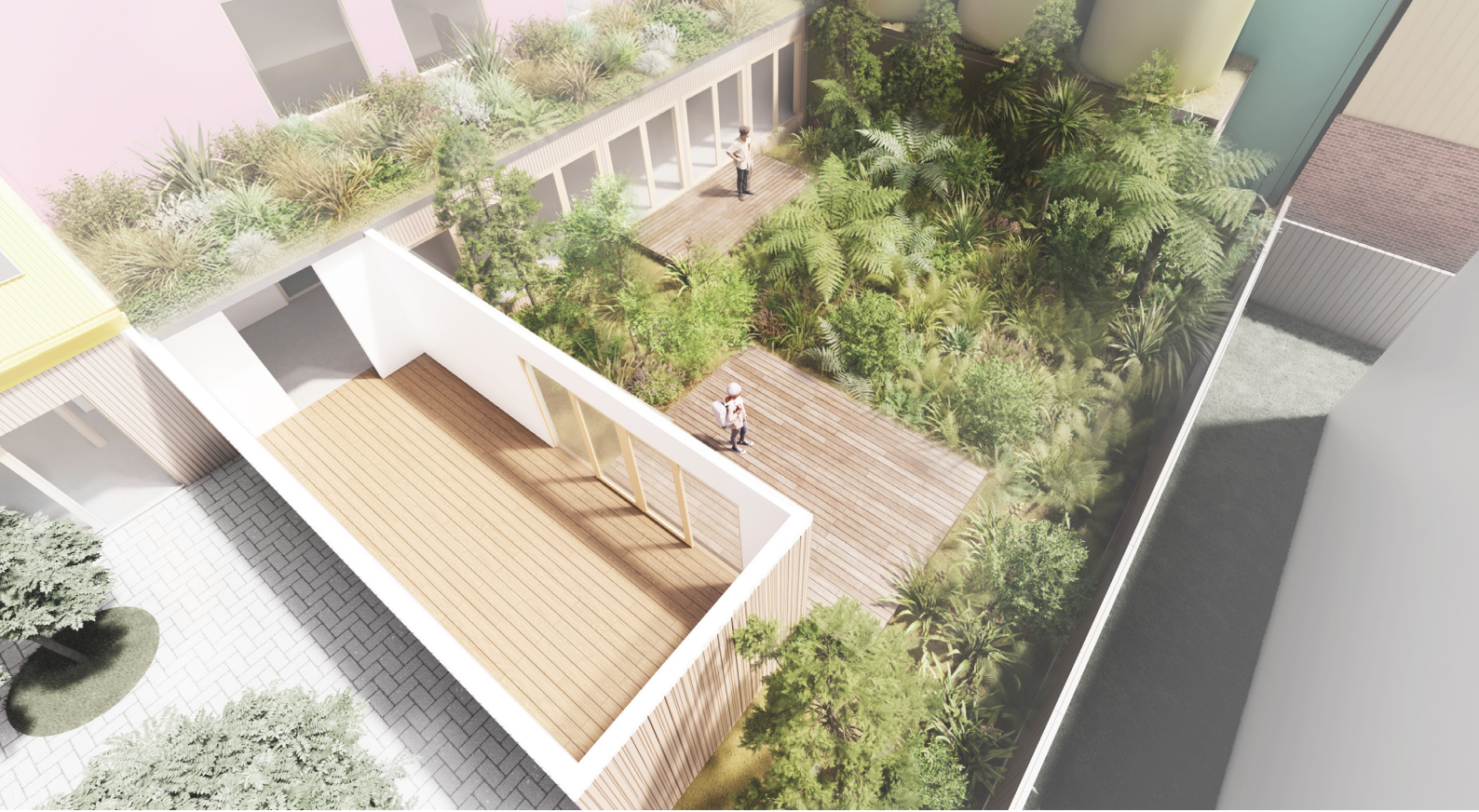
One of the Hub's values is Manaakitanga and ensuring all visitors are treated with kindness, generosity, support and respect.

The Manaaki welcome area is the primary entry point to Youth Hub Christchurch and is critical to ensuring young people can safely access support.

Designed as a low-barrier drop-in space, it provides immediate access to essential facilities including showers, laundry, kitchen, and bathrooms – removing

practical barriers that often prevent young people from seeking help.

This space enables early intervention by creating a safe, supervised environment where young people can present without an appointment and be connected to the support they need onsite.



SPIRITUAL SPACE AND QUIET COURTYARD

\$760,000

This space provides a dedicated, low-stimulation environment that supports mental wellbeing, emotional regulation and cultural and spiritual connection, especially for those experiencing anxiety and distress.

This area enables de-escalation and provides an alternative to high-energy environments within the Hub.

The flexible indoor space is designed to accommodate a wide range of cultural and faith-

based practices, ensuring inclusivity and accessibility for diverse communities.

The adjoining courtyard provides access to nature - supporting wellbeing and offering a calm outdoor environment for reflection.



ROOFTOP GARDEN AREAS

\$990,000

As the Youth Hub is an intensely developed urban site, the rooftop garden areas help to achieve the required 30% permeable area for stormwater mitigation while maximising usable outdoor space.

The rooftop gardens will support delivery of practical, hands-on programmes focused on essential life skills and employment pathways.

These spaces will enable young people to learn how to grow and prepare food - building independence

and addressing real-world barriers faced by those experiencing financial hardship.

The gardens will also support structured training opportunities, creating pathways into horticulture-related industries.

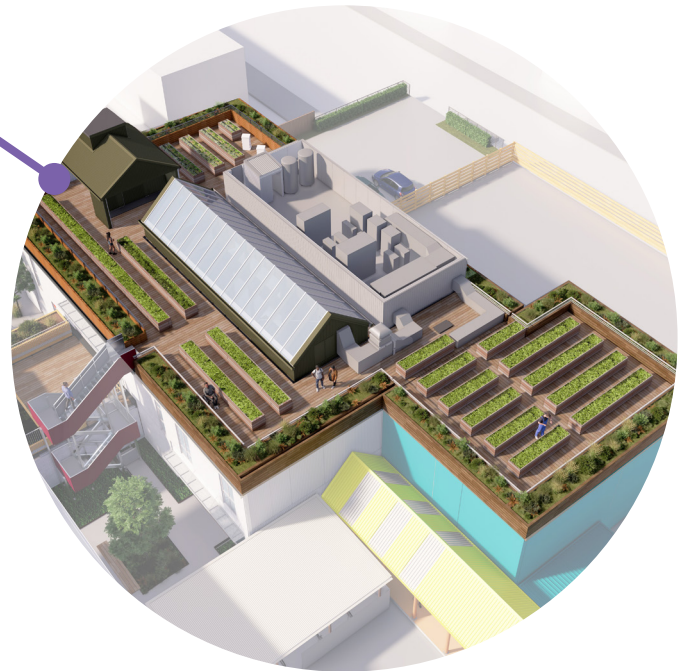


TO COMPLETE STAGE ONE

ROOFTOP GARDEN AREAS ON THE WRAPAROUND YOUTH SERVICES BUILDING AND EVENTS CENTRE

This investment enables full utilisation of the existing youth services building rooftop and Events Centre rooftop to deliver outdoor programmes that support wellbeing, life skills, and engagement for young people accessing onsite services.

\$360,000



COMPLETING FITOUT OF THE MEZZANINE OF THE WRAPAROUND YOUTH SERVICES BUILDING

\$725,000

Completing this fitout is critical to increasing capacity for youth service providers onsite and will deliver additional meeting rooms and training spaces, enabling more organisations to operate from the Hub.

OTHER ITEMS

RAINWATER HARVESTING

This system will reduce operational costs and improve long-term sustainability by capturing and reusing rainwater for activities such as toilet flushing, irrigation, cleaning and emergency supply.

\$160,000

ART GALLERY/CARVING WORKSHOP AND COURTYARD

This space will provide a dedicated platform for young people to develop, exhibit, and sell creative work – supporting pathways into creative industries and social enterprise.

Located on Salisbury Street, it will also act as a public-facing connection point between the Hub and the wider community, increasing visibility, engagement and opportunities for young people.

The inclusion of carving and traditional art forms within the gallery will also support cultural identity and expression.

\$1.1 MILLION

YOUTH APARTMENTS

We are working with government and major philanthropic organisations to fund a new wing of ten 1.5 bedroom apartments along Gracefield Ave. These homes will support young people, including those who are parents with a child in the first year of life, who can benefit from the wraparound youth services offered at the Hub. The apartments will also provide an appropriate housing option for young people who are not well suited to shared living in our existing 22-bedroom supported housing wing.

\$12.7 MILLION



FOR MORE INFORMATION

EMAIL

fundraising@youthhubchch.org.nz

PHONE 03 260 0450

BANK ACCOUNT

The Youth Hub Trust
38-9019-0612585-00

www.youthhubchch.org.nz/donate

The Youth Hub Charities Number CC54728



/youthhubchch



/youth-hub-christchurch

www.youthhubchch.org.nz

fundraising@youthhubchch.org.nz



Te Hurihanga o Rangatahi
The Youth Hub

**MAJOR
FUNDING
PARTNERS**

**Christchurch
City Council** 



 **Rātā
Foundation**

Proudly Supported by
 **New Zealand Government**
Te Kāwanatanga o Aotearoa

Anglican Care 
IN CHRISTIAN LOVE TO SERVE AND SEEK JUSTICE IN THE COMMUNITY


Wayne Francis
CHARITABLE TRUST

Rotary 